

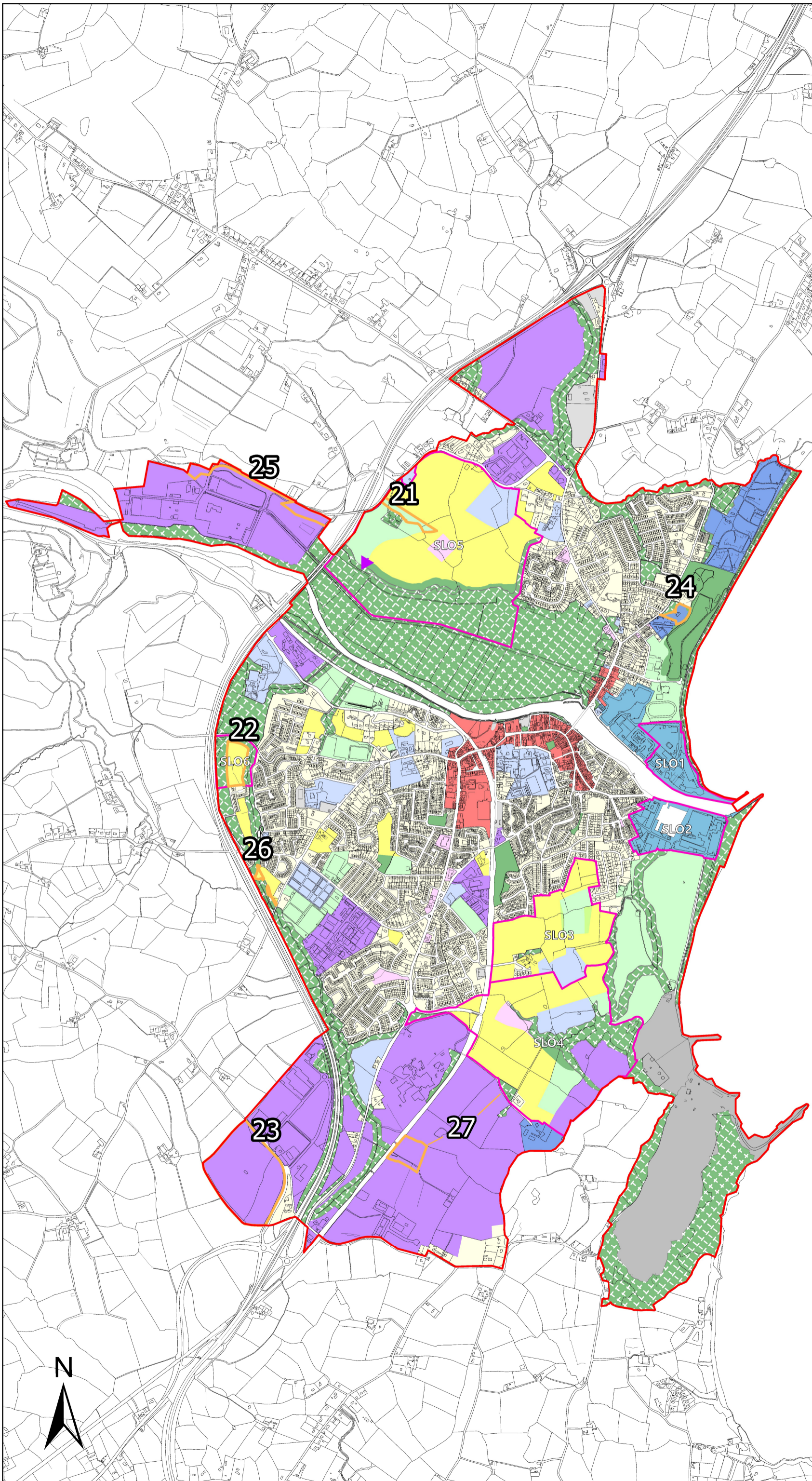
DRAFT
Arklow
Local Planning Framework
2026

Map No. 1
Proposed Altered Land Use
Zoning Objectives



LEGEND

-  Arklow LPF Boundary (as proposed to be altered)
-  Proposed Material Alterations to Land Use Zoning
-  Specific Local Objectives (as proposed to be altered)
-  RN: New Residential
-  RE: Existing Residential
-  TC: Town Centre
-  LSS: Local Shops & Services
-  PU: Public Utility
-  CE: Community & Education
-  T: Tourism
-  WZ: Waterfront Zone
-  AOS: Active Open Space
-  OS1: Open Space
-  OS2: Natural Areas
-  E1: Employment
-  EX: Extractive Industry



WICKLOW COUNTY
DEVELOPMENT PLAN
2022-2028



Wicklow County Council
Planning Department

© Ordnance Survey Ireland. All rights reserved
Licence number 2024/35CCMA/Wicklow County Council

Scale NTS